



Hurford's

Amberley Slope, Peterborough Freehold £600,000



# Key Features

 5  2  C  F

- Contemporary Style Stone Built Home
- Five Bedrooms on Offer
- Sought After Location
- Set in A Private Drive
- Quality Refitted Feature Kitchen Diner

A rare opportunity to acquire an outstanding detached family residence, beautifully positioned within an exclusive private cul-de-sac in the highly sought-after village of Werrington. This exceptional home offers over 2,500 sq. ft. of elegant, modern living - thoughtfully designed for both family life and refined entertaining.

From the moment you arrive, the property's impressive stone façade and generous proportions set the tone for what lies within. The interior blends contemporary comfort with timeless style, offering light-filled, versatile spaces perfectly suited to modern lifestyles.





### Ground Floor:

A welcoming entrance hall leads to a spacious lounge, ideal for relaxing with family or hosting guests. A dedicated study provides a quiet retreat for those working from home. The heart of the home is the magnificent L-shaped kitchen and dining area, recently refurbished to a high specification with quality fittings and abundant space for both casual and formal dining. From here, French doors open into a stunning conservatory, creating a seamless flow into additional living space bathed in natural light.

A utility room, cloakroom, and internal access to the double garage complete the ground floor. The garage itself offers excellent potential for conversion, should further accommodation or a leisure suite be desired.

### First Floor:

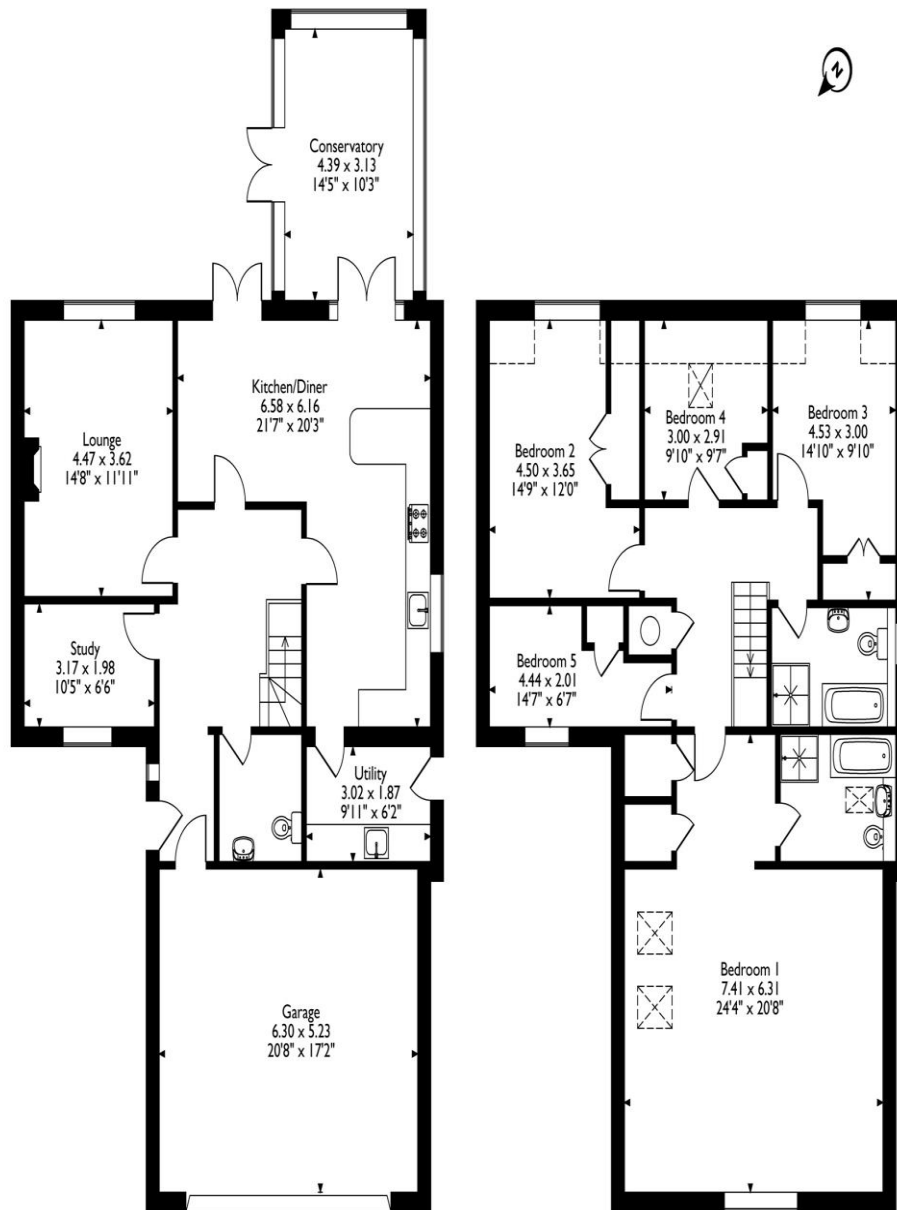
Upstairs, the home continues to impress with five generously sized bedrooms. The showpiece master suite extends to approximately 24'4" x 20'8" and features a stylish three-piece ensuite bathroom, creating a true private sanctuary. A contemporary family bathroom serves the remaining bedrooms, each tastefully appointed and well-proportioned.

### Outside:

The property enjoys a private position with ample off-road parking to the front. To the rear lies an enclosed, low-maintenance garden, providing the perfect setting for al fresco dining or quiet relaxation.



Amberley Slope, Peterborough  
Approximate Gross Internal Area  
236 Sq M/ 2541 Sq Ft



Ground Floor

First Floor

Please note that the location of doors, windows and other items are approximate and this floorplan is to be used for illustrative purposes only. Unauthorized reproduction is prohibited.

Werrington village remains one of the area's most desirable addresses, offering a strong sense of community, excellent local amenities, and convenient access to Peterborough city centre and its mainline rail connections to London.

This distinguished property represents a rare opportunity to secure an individual, high-quality family home in one of the region's most coveted locations.

Early viewing is strongly encouraged to fully appreciate the scale, style, and setting of this exceptional residence.

# Selling your property?

Contact us to arrange a FREE home valuation.

 01733 380956

 Unit 5, The Barns Milton Lane, Castor, Peterborough,  
Cambridgeshire, PE5 7DH

 [Castor@hurfords.co.uk](mailto:Castor@hurfords.co.uk)

 [www.hurfords.co.uk](http://www.hurfords.co.uk)



 SCAN ME



Hurfords is a trading name of Sharman Quinney Holdings Limited which is registered in England and Wales under company number 4174227, Registered Office is Cumbria House, 16-20 Hockliffe Street, Leighton Buzzard, Bedfordshire, LU7 1GN. VAT Registration Number is 500 2481 05.

1: These particulars do not constitute part or all of an offer or contract. 2: The measurements indicated are supplied for guidance only and as such must be considered incorrect. 3: Potential buyers are advised to recheck the measurements before committing to any expense. 4: Hurfords has not tested any apparatus, equipment, fixtures, fittings or services and it is the buyers interests to check the working condition of any appliances. 5: Hurfords has not sought to verify the legal title of the property and buyers must obtain verification from their legal representative. 6: Intending purchasers will be asked to produce identification documentation at a later stage and we would ask your co-operation in order that there will be no delay in agreeing the sale. Ref: HUC104244 - 0004

