



Hurfords

Heath Road, Helpston Peterborough Freehold: Guide Price £650,000

Key Features



- Beautifully Presented Four-Bedroom Detached Family Home
- Sought After Village Location of Helpston
- Close to Locally Schooling and Amenities Including Arthur Mellows Village College Catchment
- Contemporary Open Plan Kitchen/Dining/Family Room
- Three Additional Reception Rooms

Upon entering, you are welcomed by a spacious entrance hallway, which provides access to the reception rooms and the stunning open-plan kitchen/dining/family area.

To the front of the property, the inviting sitting room boasts a bay window, flooding the space with natural light. The room features elegant wooden herringbone flooring and a charming log-burning stove, creating a cosy atmosphere perfect for relaxation.

Double doors from the hallway lead into a generously sized dining room, complete with windows on the front and side aspects. With its ample space and LVT flooring, this room is ideal for hosting family gatherings and entertaining friends.

The heart of the home lies in the expansive open-plan kitchen/dining/family room at the rear of the property. The kitchen is designed in a contemporary shaker style and is equipped with a range of integrated appliances. A breakfast bar offers additional seating, making it a social hub for casual dining. The open layout flows seamlessly into a spacious dining and seating area, perfect for modern family living. French doors open onto the rear garden and patio, providing a wonderful setting for alfresco dining and entertaining.



Adjacent to the kitchen is a well-appointed utility room with ample space for appliances and direct access to the side of the property. The utility room also provides entry to a convenient downstairs cloakroom.

The family room, located at the rear, offers a large versatile space perfect for a further sitting room leading to the rear garden or alternatively as a children's playroom, office, studio or TV room. This area extends into a further seating space, enhanced by skylight windows and additional French doors leading to the garden, creating a bright and airy ambiance.

Upstairs, the galleried landing leads to four well-proportioned bedrooms, a family bathroom, and an additional shower room. The primary bedroom features a bay window to the front, adding character and light and is equipped with fitted wardrobes, bedrooms two, and four also benefit from fitted wardrobe and storage space.

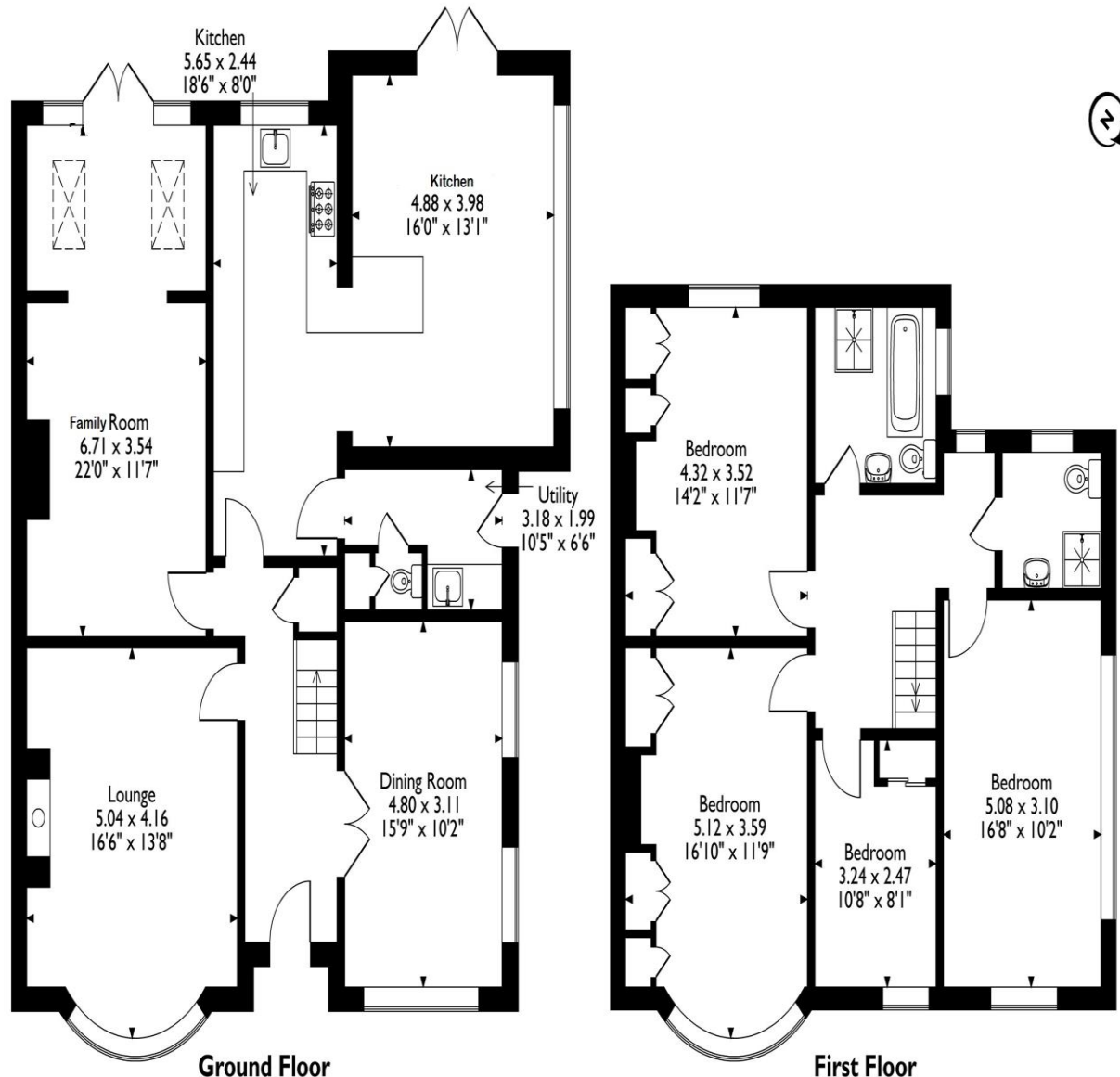
The family bathroom is luxuriously appointed with a contemporary four-piece suite, including a bathtub, shower cubicle, wash hand basin, and low-level WC, all complemented by stylish marble-effect tiling and built-in storage. The separate shower room is equally well-finished with a three-piece suite, offering convenience for busy family life.



Heath Road, Helpston, Peterborough

Approximate Gross Internal Area

192 Sq M/2066 Sq Ft



Please note that the location of doors, windows and other items are approximate and this floorplan is to be used for illustrative purposes only. Unauthorized reproduction is prohibited.

The loft to the property has a drop down loft ladder and is fully boarded, it has the potential to be converted subject to all necessary consents.

Outside, the property is approached via a gravelled driveway, providing off-road parking for multiple vehicles, framed by mature hedging for privacy.

The south-west facing rear garden is a true highlight, generously sized and predominantly laid to lawn, with mature trees lining the rear and easy to manage borders to the sides. A large, modern patio area offers the perfect space for alfresco dining, while a further gravelled area to the side presents an additional seating option. A large shed and a large garage at the rear provides a great space for all the gardening tools. The gardens are fully enclosed by fencing, ensuring a secure and private outdoor retreat.

A large garage and shed at the rear provides a great space for storage or workshops etc.

This exceptional property, blending timeless elegance with modern comforts, is a rare find in the desirable village of Helpston, offering an enviable lifestyle in a prime location.

(EPC rating was taken in 2019, since then the property has been fitted with new windows, doors, boiler, radiators and has been rendered.)

Selling your property?

Contact us to arrange a FREE home valuation.

 01733 380956

 Unit 5, The Barns Milton Lane, Castor, PETERBOROUGH,
Cambridgeshire , PE5 7DH

 info@hurfords.co.uk

 www.hurfords.co.uk



 SCAN ME



Hurfords is a trading name of Sharman Quinney Holdings Limited which is registered in England and Wales under company number 4174227, Registered Office is Cumbria House, 16-20 Hockliffe Street, Leighton Buzzard, Bedfordshire, LU7 1GN. VAT Registration Number is 500 2481 05.

1: These particulars do not constitute part or all of an offer or contract. 2: The measurements indicated are supplied for guidance only and as such must be considered incorrect. 3: Potential buyers are advised to recheck the measurements before committing to any expense. 4: Hurfords has not tested any apparatus, equipment, fixtures, fittings or services and it is the buyers interests to check the working condition of any appliances. 5: Hurfords has not sought to verify the legal title of the property and buyers must obtain verification from their legal representative. 6: Intending purchasers will be asked to produce identification documentation at a later stage and we would ask your co-operation in order that there will be no delay in agreeing the sale. Ref: HUC104201 - 0004

