



Hurfords

Robinswood, Wansford Peterborough Freehold: £875,000

Key Features

4 3 D F

- Impressive Detached Home
- Bespoke Individual Home
- Scope to Add additional Accommodation.
- Boasts over 3000 St ft Living Space
- So Private & Well Presented

Perfectly designed for modern family life, multi-generational living, or those simply seeking space and refinement, this home is a rare opportunity in one of the region's most desirable locations.

Wansford itself enjoys a prime position midway between Peterborough and Stamford, both offering excellent road and rail connections to London. The village provides everyday convenience with local amenities, including a doctor's surgery, and is well-served by a range of outstanding schools.

Stepping inside, the sense of scale is immediately apparent. The showpiece of the home is the spectacular 34-foot kitchen/family/breakfast room, framed by stunning cathedral-style windows that flood the space with natural light and provide uninterrupted views to both the front and rear. The



extensive ground floor accommodation has been thoughtfully designed to offer both open-plan entertaining areas and versatile private rooms-ideal for a large family, home working, or entertaining guests.

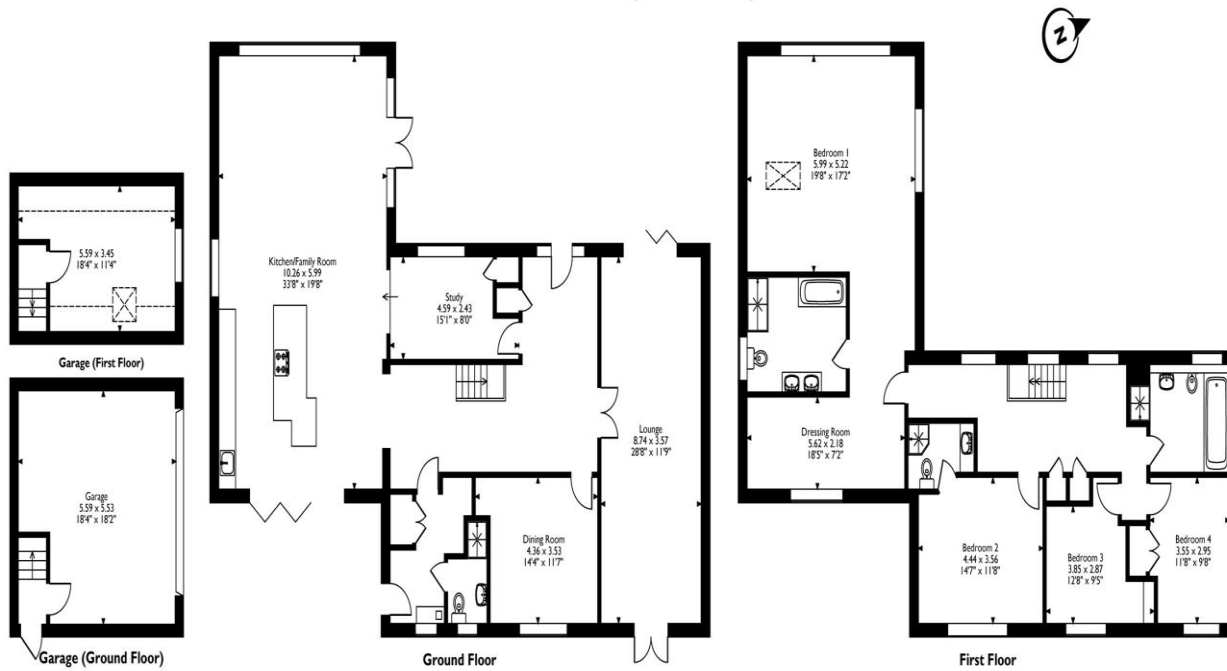
Upstairs, the master suite is a retreat in itself, complete with a private dressing area, luxurious ensuite bathroom with walk-in shower, and signature cathedral windows offering a commanding outlook over the front aspect. Three further generously proportioned bedrooms are served by a stylish family bathroom, with bedroom two also benefitting from its own ensuite facilities.

Externally, the property continues to impress. A detached double garage provides excellent storage and ample off-road parking. Above, a cleverly designed first-floor studio/menage with private staircase offers exciting potential-whether as a home office, gym, or subject to planning, a self-contained living space.

This home combines substantial scale, architectural elegance, and executive practicality in equal measure, making it one of Robins Wood finest residences.



Robinswood, Wansford, Peterborough
 Approximate Gross Internal Area
 Main House = 288 Sq M / 3100 Sq Ft
 Garage = 44 Sq M / 477 Sq Ft
 Total = 332 Sq M / 3577 Sq Ft



Please note that the location of doors, windows and other items are approximate and this floorplan is to be used for illustrative purposes only. Unauthorized reproduction is prohibited.

Selling your property?

Contact us to arrange a FREE home valuation.

 01733 380956

 Unit 5, The Barns Milton Lane, Castor, PETERBOROUGH,
Cambridgeshire , PE5 7DH

 info@hurfords.co.uk

 www.hurfords.co.uk



 SCAN ME



Hurfords is a trading name of Sharman Quinney Holdings Limited which is registered in England and Wales under company number 4174227, Registered Office is Cumbria House, 16-20 Hockliffe Street, Leighton Buzzard, Bedfordshire, LU7 1GN. VAT Registration Number is 500 2481 05.

1: These particulars do not constitute part or all of an offer or contract. 2: The measurements indicated are supplied for guidance only and as such must be considered incorrect. 3: Potential buyers are advised to recheck the measurements before committing to any expense. 4: Hurfords has not tested any apparatus, equipment, fixtures, fittings or services and it is the buyers interests to check the working condition of any appliances. 5: Hurfords has not sought to verify the legal title of the property and buyers must obtain verification from their legal representative. 6: Intending purchasers will be asked to produce identification documentation at a later stage and we would ask your co-operation in order that there will be no delay in agreeing the sale. Ref: HUC103955 - 0003

