



Driffield Way, Peterborough Freehold: £475,000

Hurfords

Key Features



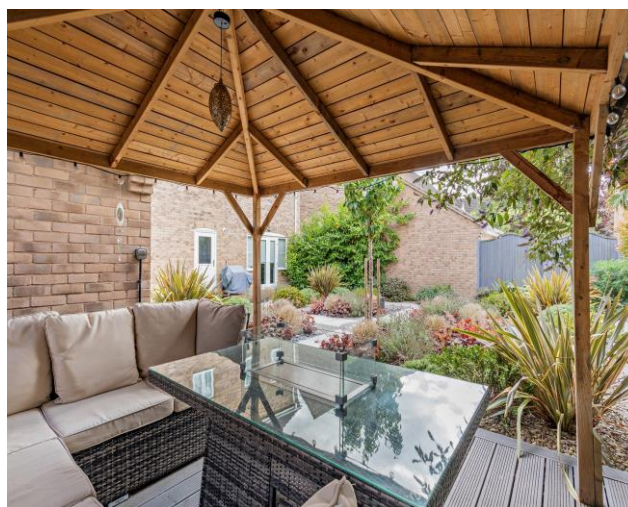
- Modern 3-storey detached townhouse offering over three floors of spacious family living
- Private driveway and detached double garage providing ample off-street parking
- Attractive front garden with manicured bushes enhancing kerb appeal
- Spacious lounge with patio doors leading to the landscaped garden
- Stylish kitchen with integrated appliances opening into a large dining area

Tucked away in a desirable residential location, this elegant home combines spacious interiors, high-end finishes, and beautifully landscaped outdoor areas, making it the ideal choice for growing families or those seeking flexible living arrangements.

As you arrive, you're greeted by manicured front that enhance the home's curb appeal. A private driveway to the side of the house leads to a detached double garage, providing ample off-street parking and storage.

Welcoming entrance hall that sets the tone for the rest of the property. On the ground floor, the expansive lounge features patio doors opening directly onto the rear garden, creating a seamless indoor-outdoor flow. The heart of the home is the impressive contemporary kitchen, fitted with high-quality integrated appliances and finished to a high standard. The kitchen opens up to a spacious dining area, ideal for entertaining. A convenient downstairs WC and separate utility room complete the ground floor.

The first floor houses the luxurious master suite, complete with a private en-suite shower room. Two



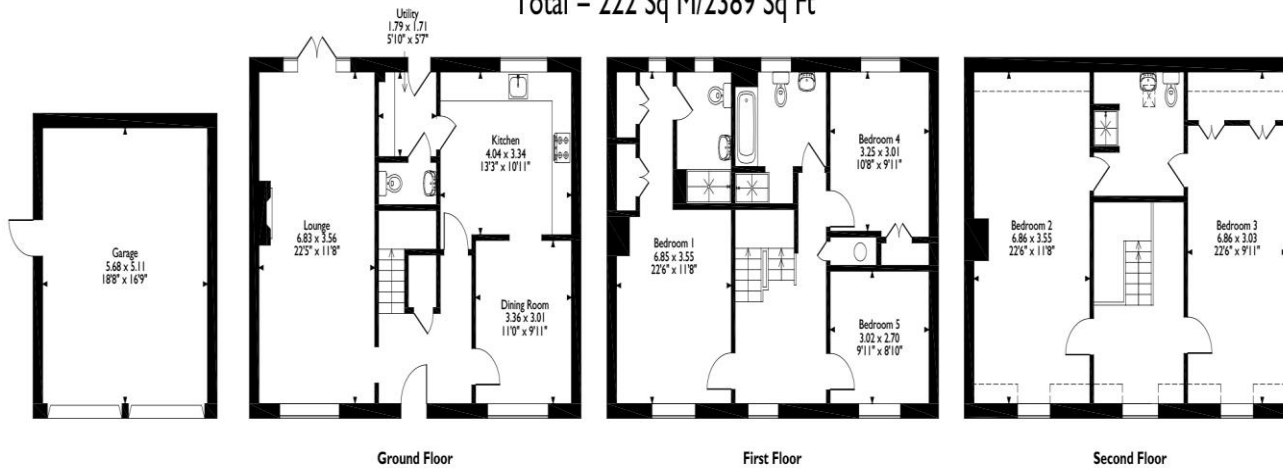
further double bedrooms and a well-appointed main bathroom are also located on this level, providing plenty of space for family or visitors.

The second floor boasts two generous double bedrooms, each with direct access to a stylish Jack and Jill bathroom.

Outside, the rear garden is a beautifully landscaped retreat, featuring paved and gravelled areas, a raised decking space with a charming pergola, and a variety of established plants, trees, and shrubs. Whether you're hosting summer BBQs or enjoying peaceful evenings under the veranda, this garden is designed for year-round enjoyment.



Driffield Way, Peterborough
Approximate Gross Internal Area
Main House = 193 Sq M/2077 Sq Ft
Garage = 29 Sq M/312 Sq Ft
Total = 222 Sq M/2389 Sq Ft



Please note that the location of doors, windows and other items are approximate and this floorplan is to be used for illustrative purposes only. Unauthorized reproduction is prohibited.

Selling your property?

Contact us to arrange a FREE home valuation.

 01733 380956

 Unit 5, The Barns Milton Lane, Castor, PETERBOROUGH, Cambridgeshire , PE5 7DH

 info@hurfords.co.uk

 www.hurfords.co.uk



 SCAN ME



Hurfords is a trading name of Sharman Quinney Holdings Limited which is registered in England and Wales under company number 4174227, Registered Office is Cumbria House, 16-20 Hockliffe Street, Leighton Buzzard, Bedfordshire, LU7 1GN. VAT Registration Number is 500 2481 05.

1: These particulars do not constitute part or all of an offer or contract. 2: The measurements indicated are supplied for guidance only and as such must be considered incorrect. 3: Potential buyers are advised to recheck the measurements before committing to any expense. 4: Hurfords has not tested any apparatus, equipment, fixtures, fittings or services and it is the buyers interests to check the working condition of any appliances. 5: Hurfords has not sought to verify the legal title of the property and buyers must obtain verification from their legal representative. 6: Intending purchasers will be asked to produce identification documentation at a later stage and we would ask your co-operation in order that there will be no delay in agreeing the sale. Ref: HUC104176 - 0003

