

To view this property call Hurfords on:
01954 710620

Hurfords

Waters Edge, Wansford Peterborough Freehold: £900,000

Key Features

 4  3  B  G

- Three Storey Home
- Marina Setting with private mooring
- Gated Exclusive Community
- Four Bedrooms
- Three Bathrooms

Set within a prestigious gated community in the charming village of Wansford, this immaculately presented contemporary home enjoys a rare combination of modern luxury, water frontage, and stunning countryside views. With direct access to local waterways via its own private jetty, and framed by beautifully landscaped gardens, this is a truly unique opportunity to own a stylish and versatile home in an idyllic setting.

Arranged over three thoughtfully designed floors, the accommodation offers superb flexibility for family living or multi-generational use, with four spacious bedrooms and three well-appointed bathrooms. The luxurious master suite boasts its own private balcony, creating a peaceful retreat with elevated views.



A high specification fitted kitchen, seamlessly flowing into a light and airy lounge further enhances the open plan vibe of this well-proportioned home.

The lounge can boast floor-to-ceiling bifold windows, with balcony access. Natural light floods this space and frames views over a landscaped garden, which gently lead down to the water's edge - a tranquil backdrop for everyday living and entertaining.

Additional highlights include ample off-road parking and a garage, Private jetty for water access and leisure and the sumptuous rear garden, perfect for relaxation or outdoor gatherings

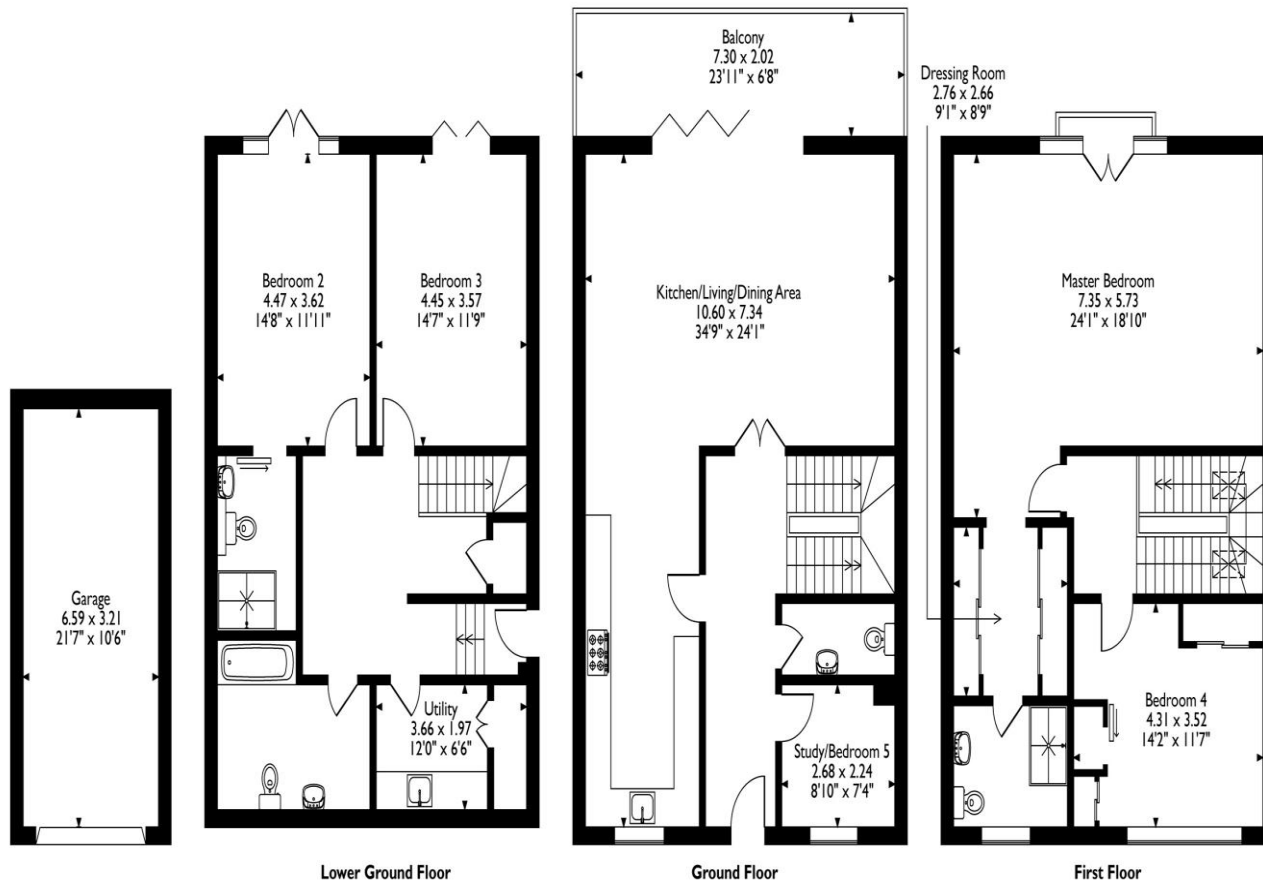
A layout ideal for growing families or those seeking lock-up-and-leave convenience

Wansford is ideally positioned midway between Peterborough and Stamford, both offering direct rail links to London and a wealth of amenities. With excellent road connections via the A47 and easy access to surrounding areas including Rutland, Oakham, Leicestershire, and Northamptonshire, the location is as convenient as it is picturesque.

Whether you're seeking a forever family home, a



Waters Edge, Wansford, Peterborough
 Approximate Gross Internal Area
 Main House = 232 Sq M/2498 Sq Ft
 Garage = 21 Sq M/226 Sq Ft
 Total = 253 Sq M/2724 Sq Ft



Please note that the location of doors, windows and other items are approximate and this floorplan is to be used for illustrative purposes only. Unauthorized reproduction is prohibited.

multi-generational living solution, or a low-maintenance lifestyle retreat, this exceptional waterside property ticks all the boxes. There is also the advantage of no onward chain.

Early viewing is highly recommended to fully appreciate the quality, space, and setting on offer.

Selling your property?

Contact us to arrange a FREE home valuation.

 01733 380956

 Unit 5, The Barns Milton Lane, Castor, PETERBOROUGH,
Cambridgeshire , PE5 7DH

 info@hurfords.co.uk

 www.hurfords.co.uk



 SCAN ME



Hurfords is a trading name of Sharman Quinney Holdings Limited which is registered in England and Wales under company number 4174227, Registered Office is Cumbria House, 16-20 Hockliffe Street, Leighton Buzzard, Bedfordshire, LU7 1GN. VAT Registration Number is 500 2481 05.

1: These particulars do not constitute part or all of an offer or contract. 2: The measurements indicated are supplied for guidance only and as such must be considered incorrect. 3: Potential buyers are advised to recheck the measurements before committing to any expense. 4: Hurfords has not tested any apparatus, equipment, fixtures, fittings or services and it is the buyers interests to check the working condition of any appliances. 5: Hurfords has not sought to verify the legal title of the property and buyers must obtain verification from their legal representative. 6: Intending purchasers will be asked to produce identification documentation at a later stage and we would ask your co-operation in order that there will be no delay in agreeing the sale. Ref: HUC104153 - 0005

