



Hurfords

Carpenters Mews, Newborough Peterborough Freehold: £575,000



# Key Features



- Chalet Style Home
- Perfect for Work From Home
- Feature Kitchen Diner
- Four Bedrooms
- Generous Sized Plot

Tucked away at the end of a quiet cul-de-sac within an exclusive, private, and secure gated community, Carpenters Muse offers a rare opportunity to acquire a beautifully crafted, chalet-style detached home. Set in the heart of the desirable Newborough Village, the property enjoys the perfect blend of countryside tranquillity with easy access to Peterborough city centre, mainline rail links, and the A1 corridor to London.

This high-quality, bespoke residence boasts spacious and versatile accommodation throughout, ideal for modern family living. The heart of the home is the stunning open-plan kitchen-diner, finished to a superb standard and featuring bi-folding doors that open directly onto the landscaped rear garden-framing uninterrupted views across open fields and inviting the outdoors





in.

Upstairs, the impressive principal bedroom suite enjoys a private dressing area and a delightful Juliet balcony, perfectly positioned to soak in the surrounding countryside. Three further bedrooms, a stylish family bathroom, and a ground floor shower room complete the internal accommodation, which also includes a separate lounge for relaxed evenings.

The property benefits from a double garage and generous off-road parking, making it as practical as it is beautiful. Located in a well-served village with local amenities, a popular junior school, and within catchment for the highly regarded Arthur Mellows Village College, this home is ideal for families and professionals alike.

Offered to the market with no onward chain, early viewing is highly recommended to appreciate the quality, setting, and lifestyle this exceptional home provides.



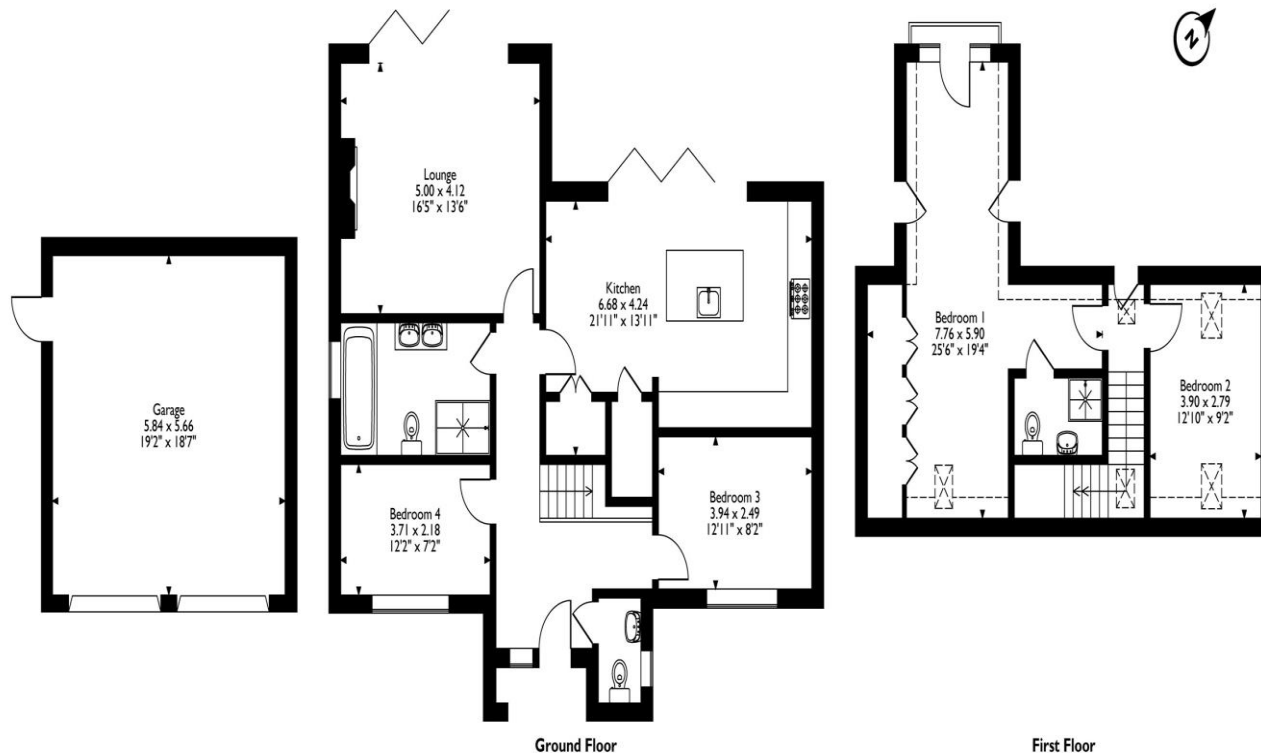
Carpenters Mews, Newborough, Peterborough

Approximate Gross Internal Area

Main House = 138 Sq M/1486 Sq Ft

Garage = 33 Sq M/355 Sq Ft

Total = 171 Sq M/1841 Sq Ft



Please note that the location of doors, windows and other items are approximate and this floorplan is to be used for illustrative purposes only. Unauthorized reproduction is prohibited.



# Selling your property?

Contact us to arrange a FREE home valuation.

 01733 380956

 Unit 5, The Barns Milton Lane, Castor, PETERBOROUGH, Cambridgeshire , PE5 7DH

 [info@hurfords.co.uk](mailto:info@hurfords.co.uk)

 [www.hurfords.co.uk](http://www.hurfords.co.uk)



 SCAN ME



Hurfords is a trading name of Sharman Quinney Holdings Limited which is registered in England and Wales under company number 4174227, Registered Office is Cumbria House, 16-20 Hockliffe Street, Leighton Buzzard, Bedfordshire, LU7 1GN. VAT Registration Number is 500 2481 05.

1: These particulars do not constitute part or all of an offer or contract. 2: The measurements indicated are supplied for guidance only and as such must be considered incorrect. 3: Potential buyers are advised to recheck the measurements before committing to any expense. 4: Hurfords has not tested any apparatus, equipment, fixtures, fittings or services and it is the buyers interests to check the working condition of any appliances. 5: Hurfords has not sought to verify the legal title of the property and buyers must obtain verification from their legal representative. 6: Intending purchasers will be asked to produce identification documentation at a later stage and we would ask your co-operation in order that there will be no delay in agreeing the sale. Ref: HUC103902 - 0001

