



Hurford's

Glover Drive, Peterborough Freehold: £425,000

Key Features

5 2 B E

- Beautifully Presented Home
- Adjacent to Local Countryside
- Five Bedrooms
- Close to a Host Of Local Amenities
- Landscaped Gardens

To the ground floor the expansive accommodation offers a generous quality Kitchen/ Diner/ Breakfast Room, the undoubted heart of the home: an expansive, light filled space ideal for family gatherings and effortless entertaining. Sleek cabinetry, premium appliances and a flow seamlessly to the garden via double French doors.

Leading from this area is an elegant Lounge accessed through matching double doors, the lounge offers refined relaxation, framed by garden vistas and designed for both quiet evenings and convivial occasions.

In addition there is are practical touches such as a separate utility room keeps laundry and everyday chores out of sight cloakroom, and a part converted garage-ready made for a home office, studio or private gym without compromising



storage.

The first floor boasts a range of five beautifully proportioned bedrooms continue the home's immaculate theme. Two luxury bathrooms (one en suite) feature contemporary fittings and stylish tiling, ensuring every family member or guest enjoys a boutique hotel experience.

A professionally landscaped rear garden delivers dedicated zones for al fresco dining, sun lounging and children's play-all bounded by mature planting for year round colour and privacy. To the front, block paved off road parking accommodates two vehicles with ease.

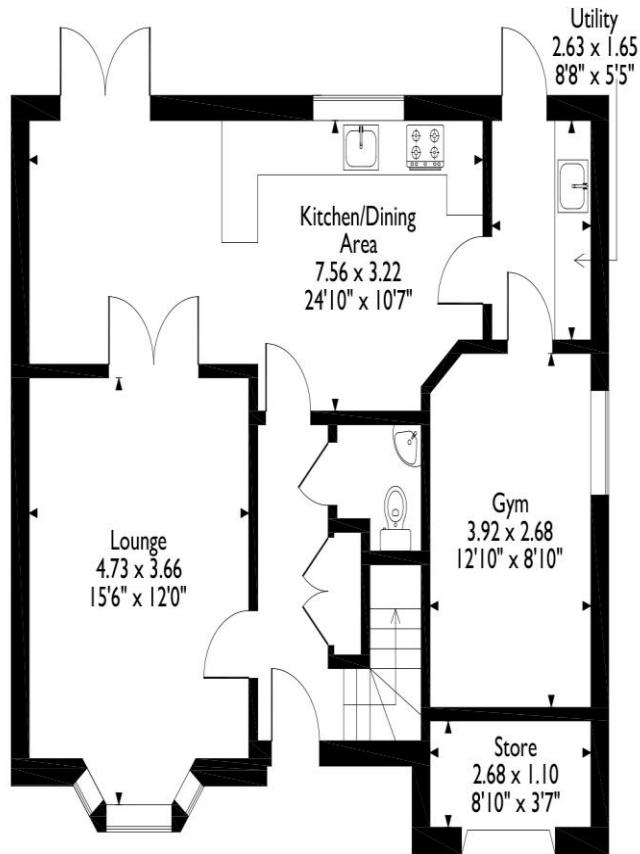
Location Advantages

Peterborough City Centre is a short drive away with access to the railway station (London Kings Cross from ~50?mins*)'

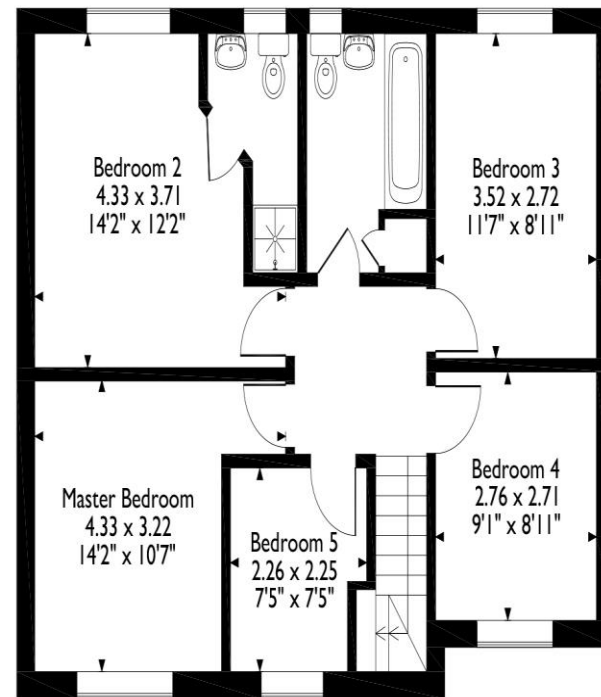
Meticulously maintained inside and out, this contemporary countryside retreat is turnkey ready for the discerning buyer seeking style, space and immediate convenience. Arrange your private viewing today to experience its exceptional quality first hand.



Glover Drive, Peterborough
Approximate Gross Internal Area
Main House = 130 Sq M/1400 Sq Ft
Outbuilding = 3 Sq M/32 Sq Ft
Total = 133 Sq M/1432 Sq Ft



Ground Floor



First Floor

Please note that the location of doors, windows and other items are approximate and this floorplan is to be used for illustrative purposes only. Unauthorized reproduction is prohibited.

Selling your property?

Contact us to arrange a FREE home valuation.

 01733 380956

 Unit 5, The Barns Milton Lane, Castor, PETERBOROUGH,
Cambridgeshire , PE5 7DH

 info@hurfords.co.uk

 www.hurfords.co.uk



 SCAN ME



Hurfords is a trading name of Sharman Quinney Holdings Limited which is registered in England and Wales under company number 4174227, Registered Office is Cumbria House, 16-20 Hockliffe Street, Leighton Buzzard, Bedfordshire, LU7 1GN. VAT Registration Number is 500 2481 05.

1: These particulars do not constitute part or all of an offer or contract. 2: The measurements indicated are supplied for guidance only and as such must be considered incorrect. 3: Potential buyers are advised to recheck the measurements before committing to any expense. 4: Hurfords has not tested any apparatus, equipment, fixtures, fittings or services and it is the buyers interests to check the working condition of any appliances. 5: Hurfords has not sought to verify the legal title of the property and buyers must obtain verification from their legal representative. 6: Intending purchasers will be asked to produce identification documentation at a later stage and we would ask your co-operation in order that there will be no delay in agreeing the sale. Ref: HUC104035 - 0010

