

The background of the entire image is a deep red color. Overlaid on this background is a pattern of stylized poppy flowers and their stems. The flowers are depicted in a darker shade of red, with some showing detailed centers. The stems are thin and leafless, creating a dense, textured look. The overall effect is a monochromatic, elegant design.

Poppy Gardens

FARCET, PETERBOROUGH

Hurfords

Poppy Gardens

Poppy Gardens is a fabulous development of just 17 homes brought to you by Formation Developments, a well-respected local developer.

This stylish collection of 2, 3 and 4 bedroom homes offer a great mix of spacious accommodation with dual aspect living rooms and patio doors which open out to the rear gardens and complete with fully fitted kitchen/dining rooms with separate utility rooms and parking spaces. The light and airy bedrooms come with ensuite to master bedrooms and complete these attractive homes which are designed to suit the modern lifestyle.



Image is CGI and only for illustrative purposes

Poppy Gardens



KEY

- Affordable Housing
- The Ladybird
- Livermere
- Livermere +



Poppy Gardens

LOCAL AREA

Farcet is well-connected to the wider region, thanks to its proximity to the city of Peterborough. Just a short drive away, residents can access a wealth of amenities, including shopping centres, restaurants, entertainment venues, and cultural attractions. The city also provides excellent transportation links, with regular train services to London and other major cities.

Farcet itself has a close-knit community atmosphere, with a range of local amenities catering to residents' needs. The village boasts a primary school, community centre, village hall, and several shops and pubs where locals can socialize and unwind. Throughout the year, various community events and activities bring residents together, fostering a strong sense of camaraderie and belonging.

History buffs will find plenty to explore in Farcet, with historical landmarks such as St. Mary's Church and Farcet Manor offering glimpses into the village's storied past. Additionally, the surrounding area is dotted with ancient sites and archaeological remains, providing fascinating insights into the region's history and heritage.

In summary, Farcet offers a harmonious blend of rural charm and urban convenience, making it an idyllic place to call home for those seeking a peaceful yet well-connected lifestyle amidst the beauty of the Cambridgeshire countryside.



Poppy Gardens

THE LADYBIRD

A three bedroom home with fantastic open plan living, a good sized lounge/diner with doors opening to the rear garden. A fitted kitchen with built in appliances and a downstairs cloakroom complete the ground floor.

Upstairs there are three bedrooms, with an ensuite to bedroom 1 and a further family bathroom.



AT A GLANCE



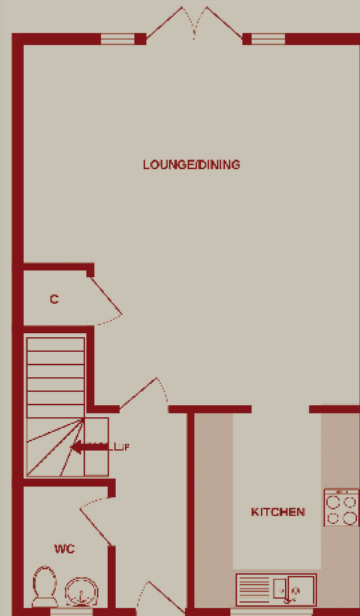
3



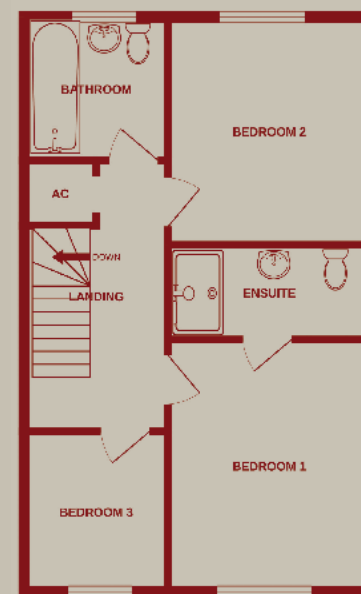
3



1



Ground floor



First floor



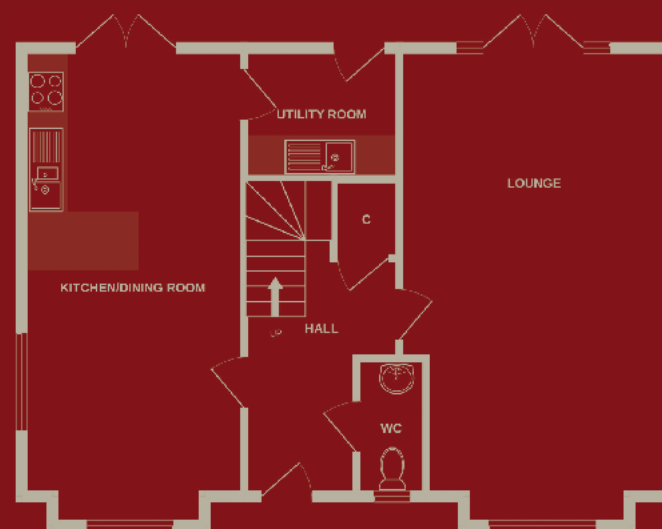
Poppy Gardens

THE LIVERMERE

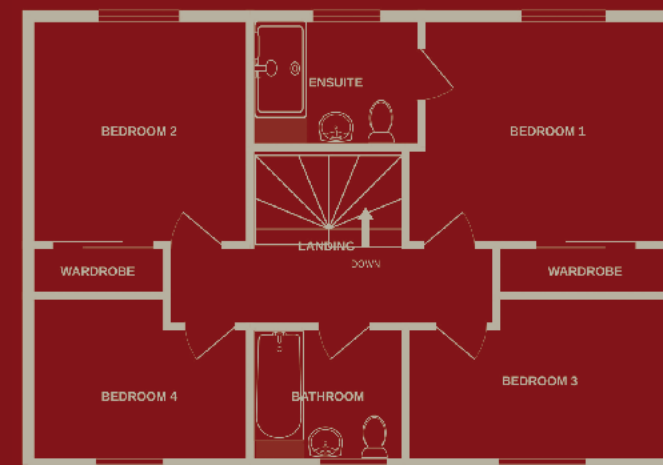
A fantastic four bedroom detached home with a dual aspect living room benefitting from doors opening to the garden. A fantastic Kitchen Dining room again offering dual aspect and doors to the rear garden. Utility room with further doors to rear, perfect for Muddy boots or indeed muddy paws.

Upstairs there are four bedrooms, three of which are double in size with an ensuite to bedroom one.

AT A GLANCE



Ground floor



First floor

Poppy Gardens

THE LIVERMERE +

A fantastic four bedroom detached home with a dual aspect living room plus an additional family room with doors to the garden and a ceiling window. A fantastic Kitchen Dining room again offering dual aspect and doors to the rear garden. Utility room with further doors to rear, perfect for Muddy boots or indeed muddy paws.

Upstairs there are four bedrooms, three of which are double in size with an ensuite to bedroom one.



AT A GLANCE



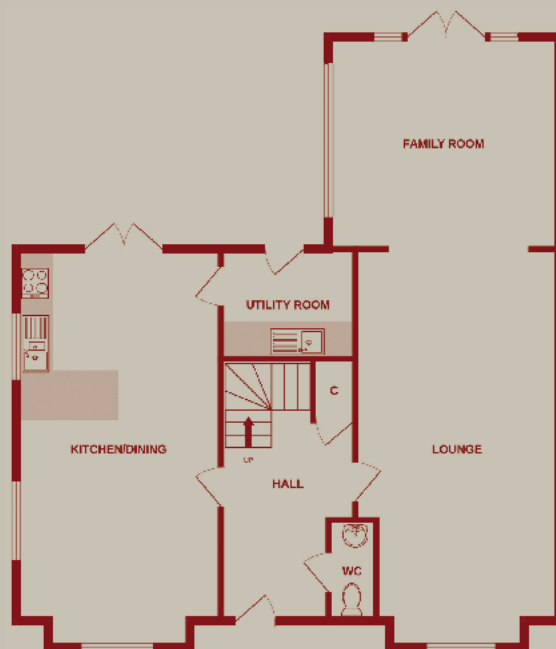
4



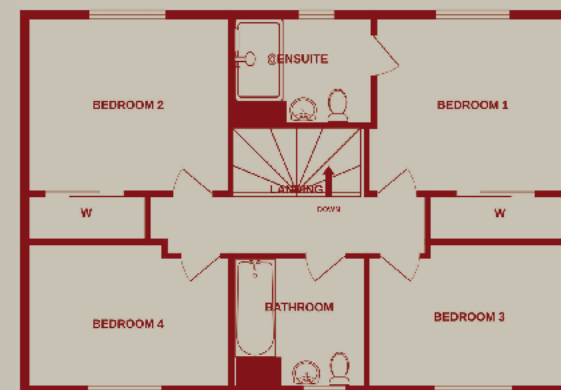
3



3



Ground floor



First floor

Poppy Gardens

SPECIFICATION

These homes boast a range of stunning features which only add to the appeal of this exclusive small development. You will find everything you need to enhance your lifestyle and enjoy your new home.

- 10 year NHBC Warranty
- Outside lights front door / patio door
- Fully fitted kitchens with built in appliances
- LED mirror cabinet and towel rail supplied in bathroom.
- LVT flooring to Wet areas
- Air source heat pump
- Underfloor heating to ground floor and radiators to first floor
- Outside tap to rear garden
- TV points - lounge and bedrooms CAT 5 cable.
- Full fibre



Poppy Gardens

LOCATION

Main Street, Farcet, Peterborough, PE7

Contact: Hurfords

Tel: 01733 380956

Email: info@hurfords.co.uk





A stylized illustration of a field of poppies in various shades of red and pink, set against a dark red background. The poppies are scattered across the frame, with some in full bloom and others as buds. The stems and leaves are depicted with fine, dark lines.

Poppy Gardens

FARCET, PETERBOROUGH

Hurfords

hurfords.co.uk