



Hurfords

4 Debdale, Orton Waterville, Peterborough Freehold £850,000



# Key Features

5 4 D D G

- Imposing Character Detached Residence
- Generous off-Road Parking & Garage
- Palatial Ground Floor Living Space
- Five Double Bedrooms
- Heart of Orton Waterville Village

Nestled in the very heart of the picturesque village of Orton Waterville, this bespoke five bedroom executive residence occupies a large mature ground yet remains just a short drive from Peterborough city centre, its mainline railway station, Ferry Meadows country park and direct access onto the A1.

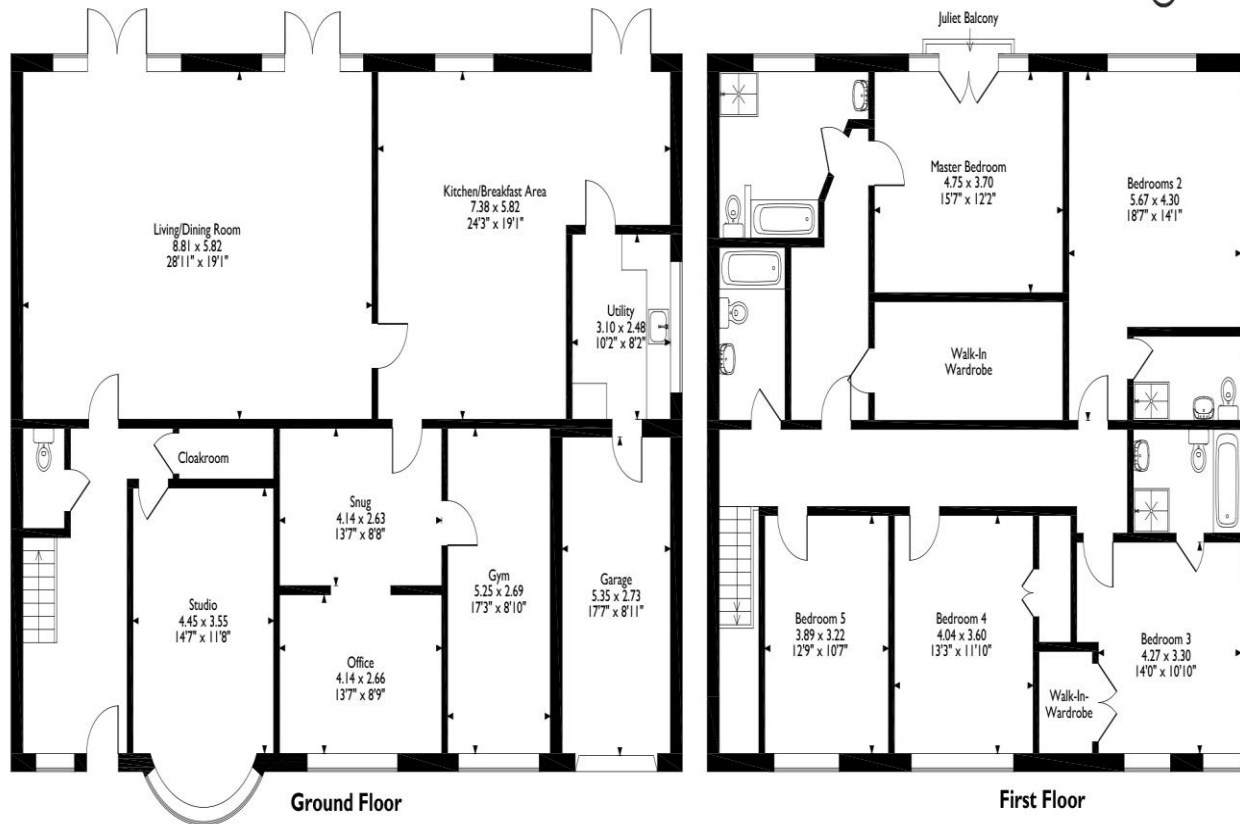
Flooded with natural light throughout, the home combines generous proportions with soaring ceilings, clean contemporary lines to create an effortlessly elegant family sanctuary.

On entering the reception hallway, you immediately begin to appreciate the size and breath of this generously proportioned family home.

The vast sized heart of the home is the family lounge, complete with feature wood burner to the fireplace, with lots of natural light flooding in from the windows overlooking the mature and very private rear garden.



Debdale, Orton Waterville, Peterborough,  
Approximate Gross Internal Area  
337 Sq M/3627 Sq Ft



Please note that the location of doors, windows and other items are approximate and this floorplan is to be used for illustrative purposes only. Unauthorized reproduction is prohibited.

Interconnecting reception rooms-ideal for grown up entertaining, as well as offering more than spacious home working for a home office.

A large fully equipped kitchen Diner/Breakfast room with access to a utility room and access to the gardens beyond.

The first floor boasts a private Principal Suite: A sumptuous retreat with large walk-in wardrobe. Complimenting the private suite is a quality fitted four-piece bathroom complete with a spa style tub, and shower.

A Guest Bedroom also offers an En suite. There are three further bedrooms, and a quality separate family bedroom, located to the sumptuous first floor accommodation.

#### Mature Grounds & Setting

Set within and surrounded by a variety of mature trees and flowering borders, the grounds offering a quiet haven for the family to enjoy, or equally an ideal venue for entertaining.

Despite its secluded feel, the property lies within easy walking distance the village, local amenities, and regular trains to London, while the A1, A47 and Ferry Meadows are all within equal reach-delivering the perfect blend of rural calm and urban connectivity.

As a further attraction for families, the property falls into the catchment area of both the Ormiston Bushfield Academy, and Orton Wistow Primary School.

To view this property call Hurfords on: 01733 380956



# Selling your property?

Contact us to arrange a FREE home valuation.

 01733 380956

 Unit 5, The Barns Milton Lane, Castor, PETERBOROUGH,  
Cambridgeshire , PE5 7DH

 [castor@hurfords.co.uk](mailto:castor@hurfords.co.uk)

 [www.hurfords.co.uk](http://www.hurfords.co.uk)



 SCAN ME



Hurfords is a trading name of Sharman Quinney Holdings Limited which is registered in England and Wales under company number 4174227, Registered Office is Cumbria House, 16-20 Hockliffe Street, Leighton Buzzard, Bedfordshire, LU7 1GN. VAT Registration Number is 500 2481 05.

1: These particulars do not constitute part or all of an offer or contract. 2: The measurements indicated are supplied for guidance only and as such must be considered incorrect. 3: Potential buyers are advised to recheck the measurements before committing to any expense. 4: Hurfords has not tested any apparatus, equipment, fixtures, fittings or services and it is the buyers interests to check the working condition of any appliances. 5: Hurfords has not sought to verify the legal title of the property and buyers must obtain verification from their legal representative. 6: Intending purchasers will be asked to produce identification documentation at a later stage and we would ask your co-operation in order that there will be no delay in agreeing the sale. Ref: HUC104061 - 0004

