



Hurford's

Rectory House, Castor Road, Marholm Freehold £1,400,000

Key Features



- Five bedroom architecturally designed family home
- Landscaped south facing rear garden
- Flexible accommodation with the potential for an internal annex
- High specification cutting-edge technology with timeless design
- Master suite with balcony, dressing room and en-suite

High-Tech Features:

This remarkable property is equipped with an array of advanced features that set it apart from the rest. The entire home benefits from a comprehensive air conditioning system with HEPA air filtration, ensuring a clean and comfortable environment year-round. An internal vacuum system adds convenience, while a sophisticated heat recovery system, paired with underfloor heating on both levels, provides efficient and consistent warmth throughout the home. Fitted in the plant room is a water softener which the entire property benefits from. High-tech lighting illuminates the property, enhancing its contemporary feel, and the windows are fitted with solar control glazing, including additional solar control on the south-facing side providing more resistance to the ultraviolet light, to maximize energy efficiency and comfort. Fibre optic is fitted direct into the house; delivering up to 1GB of Ultrafast Broadband, providing exceptional content streaming and work from home capability.

Versatile Entrance Options:

The property offers four separate access points: into the plant room, the utility room, via the garage or the main entrance hall. Upon entering through the main entrance, you are greeted by a spacious hall featuring elegant wooden herringbone flooring, which leads to the expansive ground floor accommodation.



Rectory House, Castor Road Marholm, Peterborough

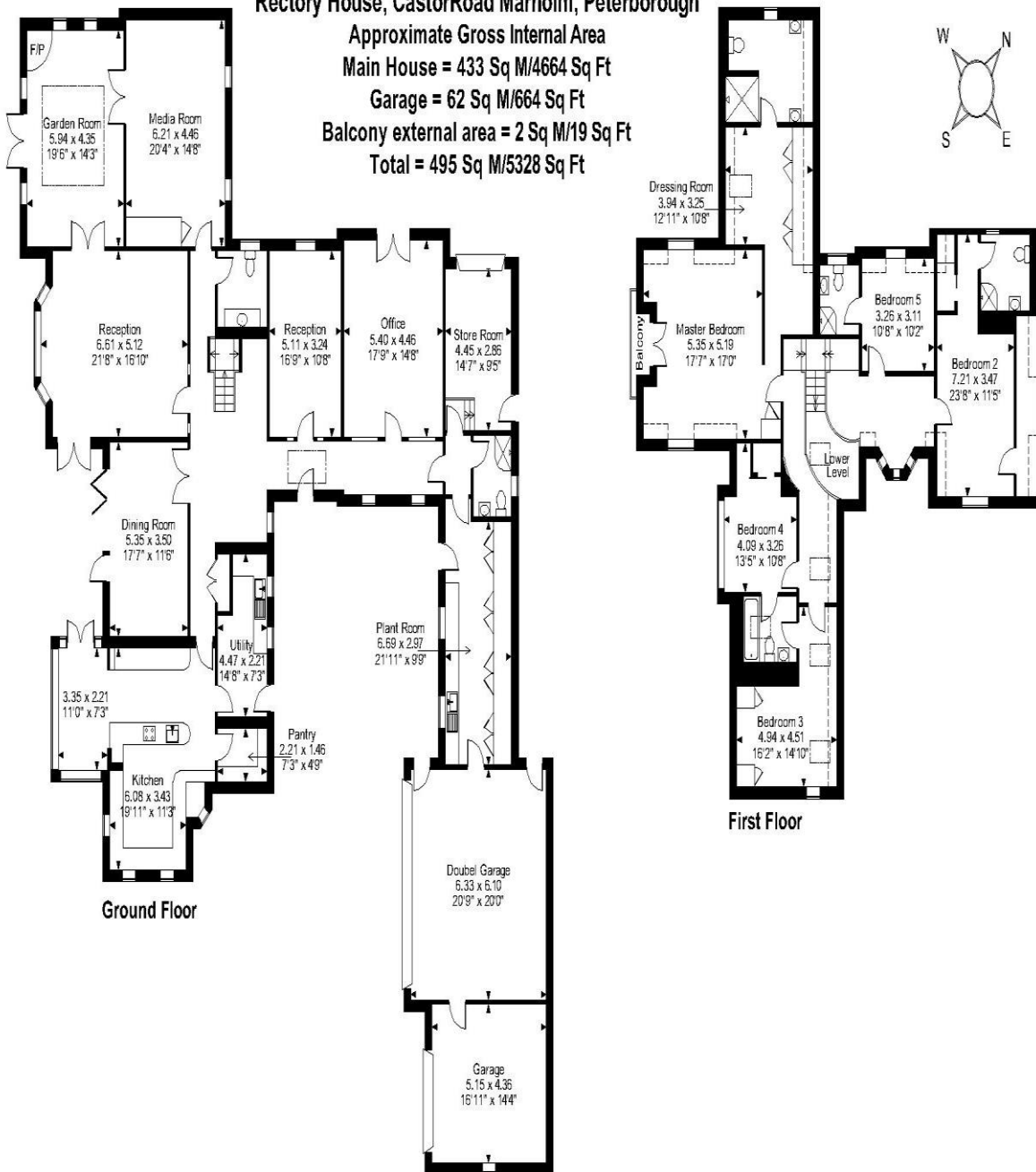
Approximate Gross Internal Area

Main House = 433 Sq M/4664 Sq Ft

Garage = 62 Sq M/664 Sq Ft

Balcony external area = 2 Sq M/19 Sq Ft

Total = 495 Sq M/5328 Sq Ft



FOR ILLUSTRATIVE PURPOSES ONLY - NOT TO SCALE

The position & size of doors, windows, appliances and other features are approximate only.

© ehouse. Unauthorised reproduction prohibited. Drawing ref. dig/8615200/AGI

Stunning Kitchen and Dining Areas:

The kitchen, located at the front of the home, is a chef's delight, featuring a range of gloss-finished base and wall units, tiled flooring, and quartz worktops. It is equipped with integrated appliances and a boiling tap, with access to a large pantry and a well-appointed utility room with additional storage and front aspect access. The kitchen seamlessly flows into a stunning open-plan dining area, with its solid oak vaulted ceiling. This space is bathed in natural light, thanks to the large windows that overlook the beautifully landscaped rear garden. French doors open onto the garden and patio, creating an effortless transition between indoor and outdoor living-perfect for hosting gatherings or enjoying family meals.

Elegant Living Spaces:

The formal dining room is a testament to the home's sophisticated design, featuring the same exquisite wooden herringbone flooring that spans the entire space. Bi-folding doors lead out to a covered patio area, making it an ideal setting for both formal dinners and alfresco dining experiences.

The formal sitting room is a sanctuary of comfort and style, featuring a large window that frames picturesque views of the rear garden.

Double doors connect the sitting room to the garden room, an extraordinary space designed for both relaxation and entertainment. With its expansive lantern ceiling window, the garden room is flooded with natural light, making it a bright and inviting space. French doors open onto the rear garden, providing easy access during the warmer months, while a contemporary log-burning stove creates a cosy and intimate atmosphere during the winter.

Entertainment and Additional Living Spaces:

A dedicated home cinema and media room provide the perfect setting for family movie nights, with ample space for seating and a projector screen (cinema system and seating available via separate negotiation). The media room can be accessed from both the garden room and the main entrance hall.

To view this property call Hurfords on: 01733 380956

Selling your property?

Contact us to arrange a FREE home valuation.

 01733 380956

 Unit 5, The Barns Milton Lane, Castor, PETERBOROUGH, Cambridgeshire , PE5 7DH

 info@hurfords.co.uk

 www.hurfords.co.uk



 SCAN ME



Hurfords is a trading name of Sharman Quinney Holdings Limited which is registered in England and Wales under company number 4174227, Registered Office is Cumbria House, 16-20 Hockliffe Street, Leighton Buzzard, Bedfordshire, LU7 1GN. VAT Registration Number is 500 2481 05.

1: These particulars do not constitute part or all of an offer or contract. 2: The measurements indicated are supplied for guidance only and as such must be considered incorrect. 3: Potential buyers are advised to recheck the measurements before committing to any expense. 4: Hurfords has not tested any apparatus, equipment, fixtures, fittings or services and it is the buyers interests to check the working condition of any appliances. 5: Hurfords has not sought to verify the legal title of the property and buyers must obtain verification from their legal representative. 6: Intending purchasers will be asked to produce identification documentation at a later stage and we would ask your co-operation in order that there will be no delay in agreeing the sale. Ref: HUC103908 - 0002

