



Longwater ,Orton Longueville Village Peterborough Freehold: £900,000

Hurford's

Key Features



- Beautifully Presented Throughout
- Recently Extended To Create Contemporary Family Home
- Over Looking Cricket Pitch
- Beautiful Landscaped Gardens
- Flexible Living Accommodation

Ground Floor

Upon entering, you are greeted by a bright and spacious entrance hall featuring a high vaulted ceiling that creates a striking first impression. A beautifully designed staircase leads to the first floor, showcasing the elegant style that continues throughout the home.

The heart of the property is the impressive open-plan kitchen, living, and dining area. This space is set in three separate areas with the kitchen having high-quality contemporary units, combining practicality with modern living. Large doors open out onto the landscaped garden, flooding the space with natural light and providing a seamless connection between indoor and outdoor living there is also a useful utility room.



Off the large sitting room with a stunning vaulted ceiling and a balcony above. A feature fireplace and a stylish media wall add a contemporary touch, while the room's design creates a light and airy space perfect for relaxation. From here, an inner hallway provides access to three well-proportioned bedrooms and a sleek, contemporary shower room.

First Floor

The first floor is dedicated to the luxurious master suite. This spacious retreat includes a private balcony with breathtaking views of the garden and cricket pitch beyond. The master bedroom is complemented by a beautifully designed ensuite, finished to the highest standards.

Outdoor Space

The exterior of the property is equally impressive. A large block-paved driveway offers ample off-road parking, leading to a detached garage. The gardens have been beautifully landscaped and include multiple covered seating areas, perfect for entertaining or enjoying peaceful moments outdoors.

An additional highlight is the versatile outdoor office building, which can be adapted for various uses, such as a home office, gym, or studio. Overlooking the cricket pitch and its serene



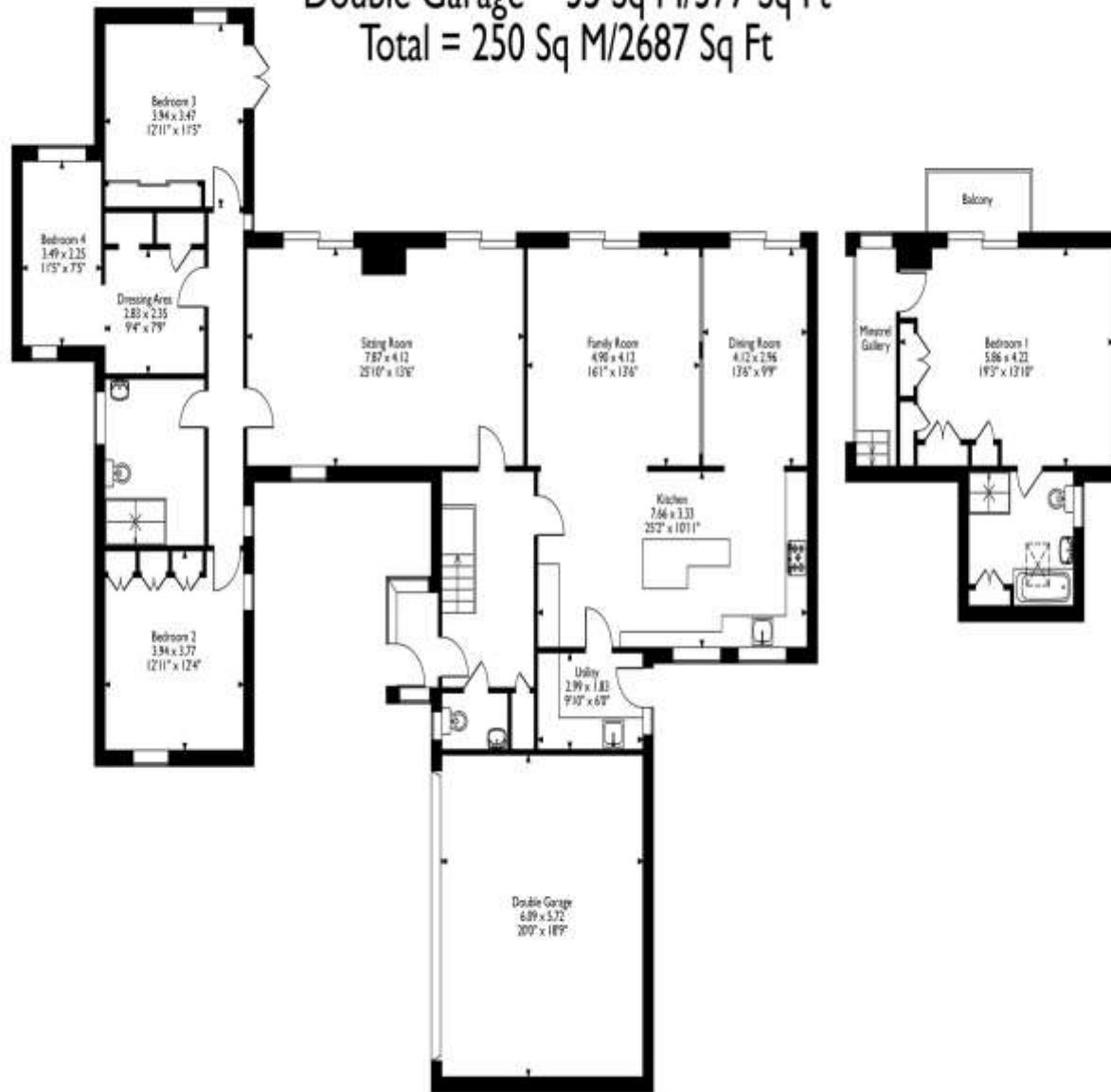
Longwater, Orton Longueville, Peterborough

Approximate Gross Internal Area

Main House = 215 Sq M/2310 Sq Ft

Double Garage = 35 Sq M/377 Sq Ft

Total = 250 Sq M/2687 Sq Ft



Ground Floor

First Floor

Please note that the location of doors, windows and other items are approximate and this floorplan is to be used for illustrative purposes only. Unauthorized reproduction is prohibited.

surroundings, this property combines contemporary living with a stunning setting, making it a truly exceptional family home.

Selling your property?

Contact us to arrange a FREE home valuation.

 01733 380956

 Unit 5, The Barns Milton Lane, Castor, PETERBOROUGH, Cambridgeshire , PE5 7DH

 info@hurfords.co.uk

 www.hurfords.co.uk



 SCAN ME



Hurfords is a trading name of Sharman Quinney Holdings Limited which is registered in England and Wales under company number 4174227, Registered Office is Cumbria House, 16-20 Hockliffe Street, Leighton Buzzard, Bedfordshire, LU7 1GN. VAT Registration Number is 500 2481 05.

1: These particulars do not constitute part or all of an offer or contract. 2: The measurements indicated are supplied for guidance only and as such must be considered incorrect. 3: Potential buyers are advised to recheck the measurements before committing to any expense. 4: Hurfords has not tested any apparatus, equipment, fixtures, fittings or services and it is the buyers interests to check the working condition of any appliances. 5: Hurfords has not sought to verify the legal title of the property and buyers must obtain verification from their legal representative. 6: Intending purchasers will be asked to produce identification documentation at a later stage and we would ask your co-operation in order that there will be no delay in agreeing the sale. Ref: HUC103903 - 0002

