



Charlotte Way, Peterborough Freehold: £425,000

Hurfords

# Key Features



- Spacious Four-Bedroom Detached Home
- Modern Kitchen/Diner
- Master Bedroom with En-Suite
- Enclosed Rear Garden
- Off-Road Parking & Single Garage

Hurfords is delighted to offer this beautifully presented four-bedroom detached family home, ideally situated in the popular Charlotte Way area of Netherton, perfect for those looking for easy access to the city centre and nearby train station. As you approach the property, you'll find it nestled on the right-hand side, surrounded by lush greenery. The home boasts a private driveway leading to a single garage, offering convenient off-road parking.

Step inside to a welcoming hallway that leads to a spacious lounge on the left, complete with elegant French doors that open out onto a charming, enclosed rear garden. On the right, you'll find a well-appointed kitchen/diner featuring ample storage at both base and eye level. The dining



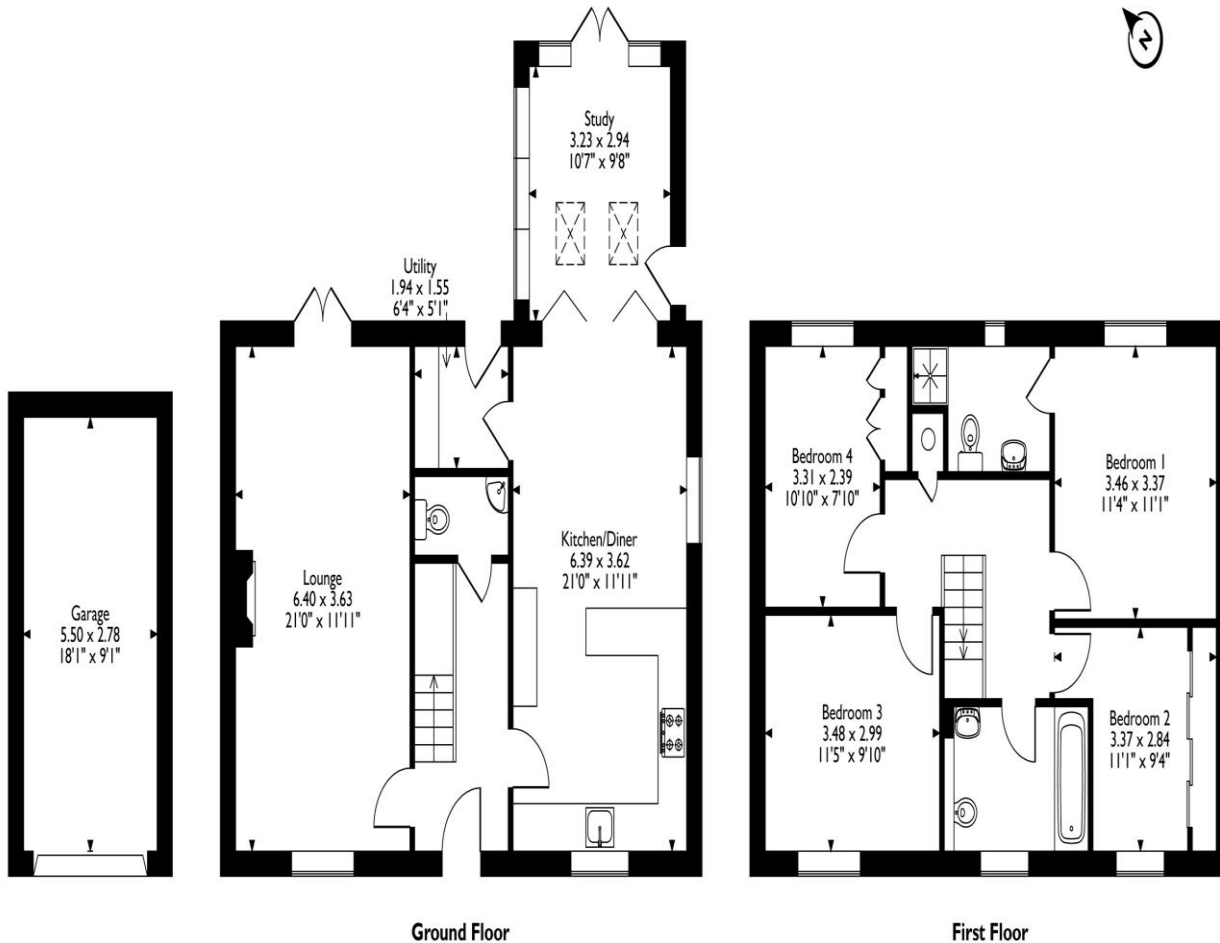
area provides plenty of space for family meals and entertaining, and leads through to a practical utility area as well as an extension, with access to the rear garden. A modern WC completes the ground floor layout.

Upstairs, the master bedroom impresses with integrated wardrobes and a contemporary en-suite featuring a shower, hand basin, and toilet. Three additional double bedrooms offer plenty of space for family or guests, all serviced by a stylish family bathroom with a bath, toilet, and hand basin. The sunny rear garden offers a delightful blend of lawn and patio areas, perfect for outdoor entertaining. The home is also complemented by a small front garden and a sleek metal fence, adding to its curb appeal.

This home offers the perfect blend of style, comfort, and location. For more information or to arrange a viewing, contact Hurford's today!



Charlotte Way, Peterborough  
Approximate Gross Internal Area  
Main House = 131 Sq M/1410 Sq Ft  
Garage = 15 Sq M/161 Sq Ft  
Total = 146 Sq M/1571 Sq Ft



Please note that the location of doors, windows and other items are approximate and this floorplan is to be used for illustrative purposes only. Unauthorized reproduction is prohibited.

# Selling your property?

Contact us to arrange a FREE home valuation.

 01733 380956

 Unit 5, The Barns Milton Lane, Castor, PETERBOROUGH, Cambridgeshire , PE5 7DH

 [castor@hurfordss.co.uk](mailto:castor@hurfordss.co.uk)

 [www.hurfordss.co.uk](http://www.hurfordss.co.uk)



 SCAN ME



Hurfords is a trading name of Sharman Quinney Holdings Limited which is registered in England and Wales under company number 4174227, Registered Office is Cumbria House, 16-20 Hockliffe Street, Leighton Buzzard, Bedfordshire, LU7 1GN. VAT Registration Number is 500 2481 05.

1: These particulars do not constitute part or all of an offer or contract. 2: The measurements indicated are supplied for guidance only and as such must be considered incorrect. 3: Potential buyers are advised to recheck the measurements before committing to any expense. 4: Hurfords has not tested any apparatus, equipment, fixtures, fittings or services and it is the buyers interests to check the working condition of any appliances. 5: Hurfords has not sought to verify the legal title of the property and buyers must obtain verification from their legal representative. 6: Intending purchasers will be asked to produce identification documentation at a later stage and we would ask your co-operation in order that there will be no delay in agreeing the sale. Ref: HUC103813 - 0005

