

Uplands, PE4 5AF
Peterborough
Cambridgeshire
£425,000

Hurfords



4



3



C



D

- Detached Extended Family Home
- Open Plan Contemporary Kitchen/Dining Room
- Expansive Corner Plot Ideal for Entertaining
- Home Office Ideal for Home Working
- Substantial Driveway and Garage
- Four Double Bedrooms with Two En-Suites

89 Uplands Peterborough Cambridgeshire PE4 5AF

Upon entering, you are greeted by a practical entrance hall, providing useful storage and leading into a welcoming entrance hall. From here, stairs give access to the first floor, while doors open to a convenient downstairs WC and a spacious lounge. The lounge is a bright and airy space, ideal for relaxing and entertaining, with double doors that open onto the rear garden, creating a seamless indoor-outdoor flow.

The heart of the home is the impressive open plan kitchen/dining room. This space features a stunning fitted kitchen with a centre island and state-of-the-art integrated appliances, including two ovens, a coffee machine, a dishwasher, and an induction hob. The kitchen also offers ample work surfaces, handle-less cupboards and drawers, a breakfast bar. There is also further space for a free-standing fridge freezer. The dining area is perfect for family meals and entertaining guests, with bi-folding doors that lead to the rear garden.

From the dining area is access into a well-appointed study-an ideal space for working from home.

First Floor: The first-floor landing provides access to four generously sized double bedrooms. Two of the bedrooms benefit from en-suite shower rooms, offering privacy and convenience. The remaining two bedrooms are serviced by a well-appointed family bathroom, ensuring ample space and comfort for the entire family.

The exterior of the property is equally impressive. An extensive driveway offers parking for multiple vehicles and leads to the garage.

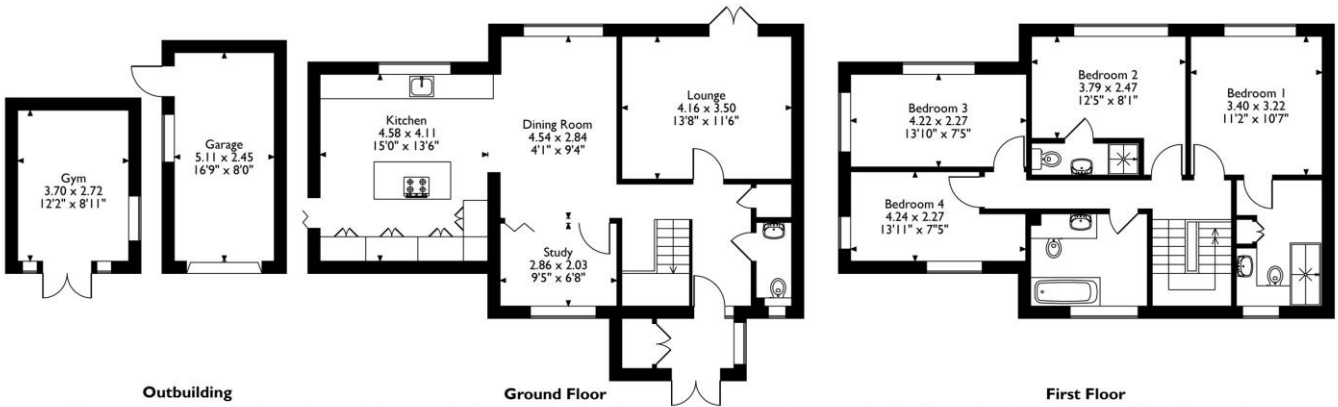
Outdoor Space: The low maintenance garden extends to the side and rear of the home, featuring patio and decked seating areas, artificial lawn, and space for a hot tub-perfect for outdoor entertaining and relaxation. Gated access to the front and side driveway adds convenience and security. Additionally, the versatile outbuilding provides flexible use, potentially serving as a gym, a home office, or additional storage.



Hurfords



Uplands, Peterborough
 Approximate Gross Internal Area
 Main House = 139 Sq M/ 1496 Sq Ft
 Garage = 13 Sq M/ 140 Sq Ft
 Outbuilding = 10 Sq M/ 108 Sq Ft
 Total = 162 Sq M/ 1744 Sq Ft



Please note that the location of doors, windows and other items are approximate and this floorplan is to be used for illustrative purposes only. Unauthorized reproduction is prohibited.



Rooms/Measurements

- Study 9'5" x 6'8"
- Kitchen 15'0" x 13'6"
- Dining Room 4'1" x 9'4"
- Lounge 13'8" x 11'6"
- Bedroom One 11'2" x 10'7"
- Bedroom Two 12'5" x 8'1"
- Bedroom Three 13'10" x 7'5"
- Bedroom Four 13'11" x 7'5"
- Garage 16'9" x 8'0"
- Gym 12'2" x 8'11"

TENURE: FREEHOLD



Hurfords



SCAN ME

Selling your property?
Contact us to arrange a FREE home valuation.

📞 01733 380956

📍 5 The Barns, Milton Lane, Castor, Peterborough, PE5 7DH

✉️ castor@hurford.co.uk

🌐 www.hurfords.co.uk

Hurfords is a trading name of Sharman Quinney Holdings Limited which is registered in England and Wales under company number 4174227, Registered Office is Cumbria House, 16-20 Hockliffe Street, Leighton Buzzard, Bedfordshire, LU7 1GN. VAT Registration Number is 500 2481 05. 1: These particulars do not constitute part or all of an offer or contract. 2: The measurements indicated are supplied for guidance only and as such must be considered incorrect. 3: Potential buyers are advised to recheck the measurements before committing to any expense. 4: Hurfords has not tested any apparatus, equipment, fixtures, fittings or services and it is the buyer's interests to check the working condition of any appliances. 5: Hurfords has not sought to verify the legal title of the property and buyers must obtain verification from their legal representative. 6: Intending purchasers will be asked to produce identification documentation at a later stage and we would ask your co-operation in order that there will be no delay in agreeing the sale. Ref: HUC103768 PDAF 0001

