

Chisenhale, PE2 5FP
Orton Waterville
Peterborough
£575,000

Hurfords



4



2



C



F

- No Onward Chain
- 4 Bedroom Detached House
- En-Suite to Master Bedroom
- Double Width Driveway Leading to Double Garage
- Short Walk to Ferry Meadows Country Park
- 10-Minute Drive to Peterborough Train Station
- Highly Sought-After Area of Peterborough

23 Chisenhale Orton Waterville Peterborough PE2 5FP

Nestled in the highly sought-after area of Orton Waterville in Peterborough, this exquisite 4-bedroom detached home offers a perfect blend of comfort and convenience. Boasting a "no onward chain" status, this property is an ideal choice for those looking to move swiftly into their dream home.

As you step inside, you are greeted by two spacious reception rooms, providing ample space for both relaxation and entertaining. The well-appointed kitchen/dining area serves as the heart of the home, perfect for family meals and gatherings.

The master bedroom features an en-suite, offering a private retreat for relaxation. The three additional bedrooms are generously sized, ensuring plenty of space for family or guests. Outside, the property includes a double garage and a double-width driveway, providing secure parking and additional storage. The proximity to Ferry Meadows Country Park offers endless opportunities for outdoor activities and scenic walks, making it a haven for nature enthusiasts. Additionally, the home is just a 10-minute drive to Peterborough Train Station, ensuring easy access for commuters too.

Don't miss the chance to make this beautiful home in Orton Waterville yours. Contact us today to arrange a viewing!

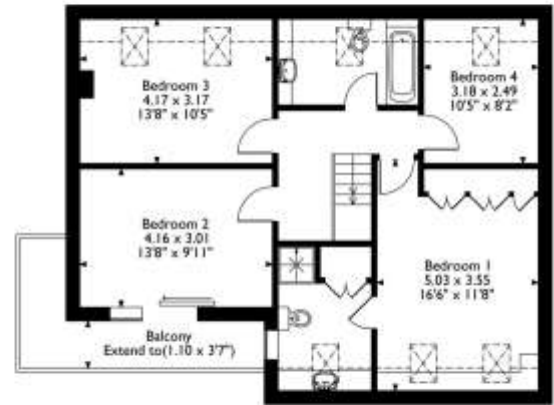


Hurfords

Chisenhale, Orton Waterville, Peterborough
Approximate Gross Internal Area
183 Sq M/1970 Sq Ft



Ground Floor



First Floor

Please note that the location of doors, windows and other items are approximate and this floorplan is to be used for illustrative purposes only. Unauthorized reproduction is prohibited.



Rooms/Measurements

Lounge 23'3" x 13'9"
Kitchen 18'7" x 10'4"
Dining Room 15'4" x 11'7"
Garage 19'8" x 17'7"
Bedroom One 16'6" x 11'8"
Bedroom Two 13'8" x 9'11"
Bedroom Three 13'8" x 10'5"
Bedroom Four 10'5" x 8'2"
Balcony

TENURE: FREEHOLD



Hurfords



SCAN ME

Selling your property?
Contact us to arrange a FREE home valuation.

01733 380956

5 The Barns, Milton Lane, Castor, Peterborough, PE5 7DH

castor@hurford.co.uk

www.hurfords.co.uk

Hurfords is a trading name of Sharman Quinney Holdings Limited which is registered in England and Wales under company number 4174227, Registered Office is Cumbria House, 16-20 Hockliffe Street, Leighton Buzzard, Bedfordshire, LU7 1GN. VAT Registration Number is 500 2481 05. 1: These particulars do not constitute part or all of an offer or contract. 2: The measurements indicated are supplied for guidance only and as such must be considered incorrect. 3: Potential buyers are advised to recheck the measurements before committing to any expense. 4: Hurfords has not tested any apparatus, equipment, fixtures, fittings or services and it is the buyer's interests to check the working condition of any appliances. 5: Hurfords has not sought to verify the legal title of the property and buyers must obtain verification from their legal representative. 6: Intending purchasers will be asked to produce identification documentation at a later stage and we would ask your co-operation in order that there will be no delay in agreeing the sale. Ref: HUC103525 PDAF 0003

