



Glinton Road, Helpston Peterborough Freehold: £365,000

Hurford's

# Key Features



- Sought after village location of Helpston
- Great access to local schools including Arthur mellows Village College Catchment and John Clare primary School
- Character stone built cottage
- Large driveway and cart port providing off road parking for multiple vehicles

Nestled in the heart of the sought-after village of Helpston, this enchanting 3/4 bedroom stone-built character cottage offers captivating open field views to the rear. Presented with the significant advantage of no onward chain.

Step into a world of comfort and space with four large reception rooms, including a lounge adorned with a feature fireplace, and large window to the front aspect filling the space with a wealth of light. The dining room provides an ample dining space for all the family to enjoy, while the versatile downstairs reception room stands ready to be a convenient downstairs bedroom, complete with an en-suite shower room. The downstairs bedroom/reception room is flexible with its usage and could be utilised as a further sitting room, dining room or children's play room.



The well-equipped kitchen boasts tiled flooring and walls, complemented by an integrated oven and hob. Adjacent to the kitchen, a thoughtfully designed utility room adds to the practicality of daily living. The property continues with a spacious conservatory, featuring tiled flooring and French doors that open to a rear patio, perfect for enjoying the serenity of the surroundings.

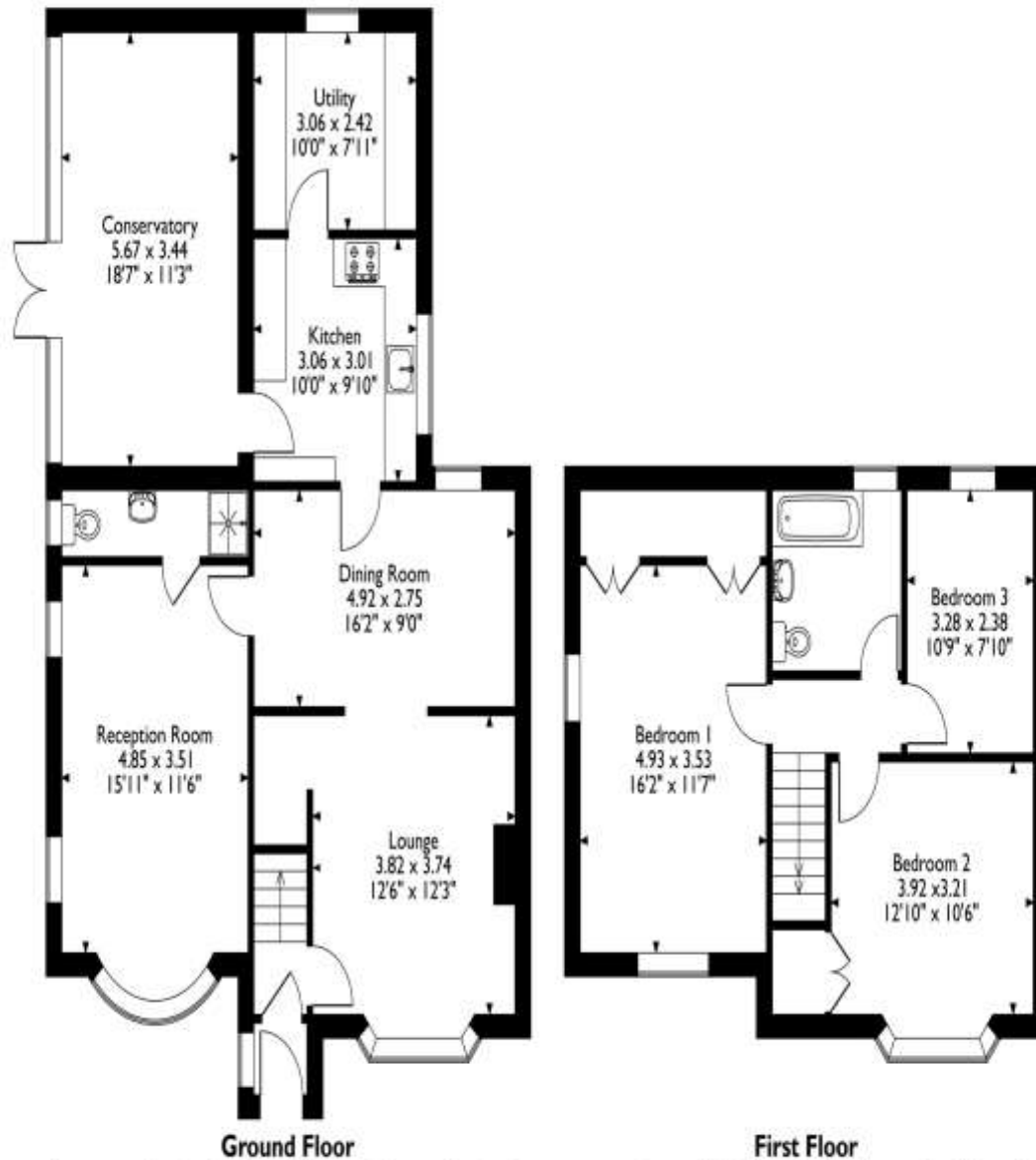
Ascend the staircase to the first floor, where two double bedrooms, a single bedroom, and a family bathroom await. Fitted wardrobes benefit the double bedrooms, enhancing storage space. The master bedroom is full of character with exposed stonework. The family bathroom showcases a three-piece suite, comprising a bathtub, wash hand basin, and low-level WC.

Beyond the interiors, the outdoor space beckons with a large driveway and a convenient carport ensuring ample parking. The rear garden, framed by an array of stone-built outbuildings, is enclosed by fencing and mature hedging, offering a private haven with views over open fields.

This property seamlessly marries character with family living, providing an idyllic retreat within the sought after village of Helpston with, captivating



Glinton Road, Helpston, Peterborough, Cambridgeshire  
Approximate Gross Internal Area  
146 Sq M/1576 Sq Ft



Please note that the location of doors, windows and other items are approximate and this floorplan is to be used for illustrative purposes only. Unauthorized reproduction is prohibited.

views, and the added benefit of no onward chain.

# Selling your property?

Contact us to arrange a FREE home valuation.

 01780 752136

 Unit 5, The Barns Milton Lane, Castor, PETERBOROUGH, Cambridgeshire , PE5 7DH

 [stamford@hurfords.co.uk](mailto:stamford@hurfords.co.uk)

 [www.hurfords.co.uk](http://www.hurfords.co.uk)



 SCAN ME



Hurfords is a trading name of Sharman Quinney Holdings Limited which is registered in England and Wales under company number 4174227, Registered Office is Cumbria House, 16-20 Hockliffe Street, Leighton Buzzard, Bedfordshire, LU7 1GN. VAT Registration Number is 500 2481 05.

1: These particulars do not constitute part or all of an offer or contract. 2: The measurements indicated are supplied for guidance only and as such must be considered incorrect. 3: Potential buyers are advised to recheck the measurements before committing to any expense. 4: Hurfords has not tested any apparatus, equipment, fixtures, fittings or services and it is the buyers interests to check the working condition of any appliances. 5: Hurfords has not sought to verify the legal title of the property and buyers must obtain verification from their legal representative. 6: Intending purchasers will be asked to produce identification documentation at a later stage and we would ask your co-operation in order that there will be no delay in agreeing the sale. Ref: HUC103587 - 0007

